

**Englishman River Watershed Recovery Plan
Information & Coordination
Project**

May 2002 to April 2003

Prepared for

Pacific Salmon Endowment Fund Society
&
Vancouver Foundation



By

Faye Smith, Carol Cornish, Mark Warrior and Barbara Stevens

April 2003

SUMMARY

- MVIHES

The Mid-Vancouver Island Habitat Enhancement Society's (MVIHES) mandate is to promote and undertake fish habitat stewardship, restoration and enhancement in the mid-Vancouver Island area. Through the efforts of many volunteers and the support of local residents and businesses the MVIHES has been able to promote community involvement and participation in our mandate.

- The Project

The objectives--to coordinate and disseminate information regarding the Englishman River Watershed Recovery Plan (ERWRP) progress and opportunities for participation, and to raise public awareness of the Recovery Plan--have been successfully met.

- Logo

One of our first activities was to have a logo designed. The logo shows two fish in a river representing the two target species, coho and steelhead, and it includes trees and an eagle to represent the whole watershed. The logo has received much favourable comment everywhere it has been displayed.

(Appendix 1)

- Newsletter

A very successful project has been the ERWRP Newsletter: *The Englishman Patient*. The format for the paper was also professionally designed, and again has attracted favourable comment. Five newsletters were produced over the year. Each issue addressed different aspects of the Plan and highlighted the progress being made. *The Englishman Patient* is sent out to approximately 100 people and organizations by email and post. Twenty to thirty more are hand-delivered or dropped off at public locations and the remainder are available at our display table at community events. (Appendix 14)

- Special Events

In September MVIHES formally introduced the ERWRP at a gala wine and cheese event that was preceded by a media briefing. Reporters from the local papers attended the media event as did Shaw cable. Local politicians and representatives of regional agencies (DFO, MWLAP, RDN, etc.) attended as well as members of the business community and streamkeepers. Local and regional wines, cheeses, fruits and breads were the featured refreshment. The gala introduction of the Plan to the community continued the following day with a salmon barbeque and environmental displays down at the Englishman River estuary. Many volunteers took part in this Celebration. Both events were well attended by the invitees and the general public. The media responded with several newspaper articles, a cable TV interview and an extensive radio interview.

- Community Events

MVIHES attended fifteen community events and educational opportunities throughout the area with ERWRP information and displays. Each of these events was attended by hundreds of local and visiting people who showed great interest in our work and appreciation for the knowledge they had gained. Many signed up for more information and we have made some really good community and school contacts at these events.

- Website

Continuing work on the MVIHES website (www.mvihes.bc.ca) is helping it remain a useful information site for local stewardship groups as well as school children and the community at large. An extensive section on the Englishman River Watershed Recovery Plan has been added, making the site a very useful source of up-to-date information and reports on the recovery plan process.

- Media

There have been many contacts with the media over the past year providing coverage of special events and projects, and we have provided photo opportunities and press notices. When the BC Outdoor Recreation Council again ranked the Englishman River as the 2nd Most Endangered in the province, we seized the opportunity to further publicize the Plan. A press notice went out to local and regional media outlets and to hundreds of people on the Landwatch email list. Several newspaper articles appeared and we were interviewed on CBC radio. (Appendix 13)

- Community Participation

An important part of the Recovery Plan is community participation and decision-making. To accomplish this goal MVIHES has helped establish a Community Roundtable, which includes large landowners, agency personnel, regional and local representatives, First Nations, streamkeepers, businesses and interested individuals. This group meets several times a year, as necessary, to review progress and give input to future projects. From this Roundtable, a Steering Committee was struck. The steering committee developed the process for issuing calls for proposals and reviewing applications for funding. This committee assists proponents on project development, if required, and makes recommendations for the allocation of funds to the PSEF Technical Committee, which makes the final decision.

- Fund Raising

Because the PSEFS cannot fund all the projects required to bring about a “recovery” of the watershed and its endangered fish, MVIHES spends considerable time searching for other funding. We have just been approved as a Registered Charity and are hopeful this will expose more opportunities for additional funding.

- Interpretive Sign

A large Englishman River watershed map was created and placed in a vandal-proof frame to be installed at the entrance to the popular walking trail at the estuary. The sign indicates the watershed boundary and sub-basin boundaries, the general fish distribution throughout the watershed, the impacts, the restoration plans, species at risk, photographs and more. (Appendix 12)

TABLE OF CONTENTS

STATISTICAL SUMMARY.....6

ACTIVITIES BY MONTH (Information & Coordination).....8

EXPENDITURE REPORT.....12

STEWARDSHIP & EDUCATION EXPENDITURES.....13

APPENDICES LIST.....14

Statistical Summary PSEFS Final Report –

The MVIHES contracted with the PSEFS to perform, or to administer on the PSEFS' behalf the performance of, the following ERWRP-related tasks:

1. Providing administrative support to ERWRP's Community Round Table (RT) and any RT sub-committees;
2. Liaising with the PSEF on ERWRP's and the RT's behalf;
3. Publication of an ERWRP newsletter;
4. Undertaking ERWRP's public and media relations, including organizing and participating in public awareness, community, and media events;
5. Maintaining ERWRP's Internet presence by forwarding ERWRP updates to the PSEF;
6. Developing and implementing an ERWRP "other funding sources" strategy;
7. Undertaking community stewardship and education activities.

The MVIHES carried out its contractual obligations as follows:

1.
 - i. The MVIHES prepared an agenda, notified members, facilitated, and circulated minutes for **4 RT** meetings whose average attendance was **18**;
 - ii. The MVIHES prepared an agenda, notified members, facilitated, and circulated minutes for **3 RT Steering Committee** meetings whose average attendance was **10**;
2. The MVIHES maintained regular contact by telephone and e-mail with the PSEFS on behalf of the RT, the RT Steering Committee, and ERWRP Project Proponents throughout the year;
3. The MVIHES researched, wrote, and published **5 issues** of ERWRP's 4 page newsletter, *The Englishman Patient*, **100 copies** were e-mailed or posted to a subscription list, **30 copies** of which were dropped of at public locations, with the remaining **20 copies** being distributed at public events;
4.
 - i. The MVIHES organized **2 "official opening"** events for ERWRP (**275** attended);
 - ii. The MVIHES prepared display and written materials for and attended **11 public community events** attended by a total of some **3,560** people;
 - iii. The MVIHES made presentations to/represented ERWRP at **8 community meetings** (2 school classes, 6 community group /local agency);
 - iv. The MVIHES prepared a Media Backgrounder Kit and generated **21 media stories**, including **1 TV**, **4 radio** (2 CBC, 2 local), and **16 Newspaper**.
5. The MVIHES provided updates as requested for the PSEFS Website as well as adding an extensive ERWRP section to its own website (<http://mvihes.bc.ca>);
6. The MVIHES has undertaken research on and held discussions with the RT Steering Committee on obtaining funds from other (non-PSEFS) sources. A report is being prepared;
7. Some, but not all, of the tasks under point #7 above were contracted out by MVIHES, on the PSEFS' instructions, to the Arrowsmith Watershed Stewardship Team.

Additional Tasks (not-contracted):

1. The MVIHES drafted and obtained consensus on an **RT Terms of Reference**, including the **Steering Committee Terms of Reference & Membership**.
2. The MVIHES organized an **ERWRP Call for Proposals** process, including organizing a **Technical Review Committee**, drafting and circulating a **Call for Proposals**, preparing Application Forms, and then preparing submissions to the Call for review by the Technical and Steering Committees;
3. The MVIHES facilitated ERWRP's **Project Endorsement Process**, resulting in the submission to PSEFS of proposals endorsed by the community and within the PSEFS' funding limits.

INFORMATION & COORDINATION ACTIVITIES:

May 2002

- Developed Media Kit: **ERWRP Media List** and **ERWRP Backgrounder** (Appendix 2), about ERWRP and PSEFS.
- ERWRP Planning: Public Awareness Event (Media Briefing and Wine & Cheese) and Englishman River Celebration (Sept 13 & 14).
- Education & Awareness:
 - Presentation to two Elementary school classes, Nanoose Bay.
 - Display at Airport Days, QB (>300 attended)
 - Interactive and information display at Family Day, QB (>300 attended)
 - Presentation to Arrowsmith Naturalists, Parksville

June 2002

- Organized and facilitated ERWRP Roundtable meeting (21 attended)
- Newsletter format and design completed
- Organized ERWRP Planning meetings and meetings with PSEFS
- Created contact list of Recovery Plan participants and interested parties
- Education & Awareness:
 - Presentation to Scouts, Parksville
 - Planning meeting with DFO & fisheries Biologist re: public/student projects
 - Storm Drain Marking Shelly Creek watershed, Parksville Scouts
 - Organize article written by Scouts for ERWRP newsletter
 - Organize Scouts submitting press release to the PQ News
 - Article written for MVIHES Newsletter
 - Press notice for PQ News

July 2002

- Organized and facilitated ERWRP Roundtable - Project Evaluation meeting (10 attended)
- Designed and commissioned an ERWRP Logo and Banner
- Prepared **ERWRP Summary of Achievements** (Appendix 3) document
- Education & Awareness:
 - Storm Drain Marking –Summer Students, Englishman River watershed
 - Gathered information for the ERWRP website
 - Organized community participation for Englishman River Celebration
 - **The Englishman Patient** written produced and distributed (4 page ERWRP newsletter)

August 2002

- Upgraded and prepared displays for public events
- Prepared for wine & cheese event (**Wine and Cheese2002 – event outline** (Appendix 4), **WC -Media invitation** (Appendix 5))
- Designed and printed Englishman River Celebration posters (30)
 - Hired a High School student to assist with ERWRP Community Outreach and Streamkeeper activities

August 2002 (cont.)

- Education & Awareness:
 - French Creek Fishing Derby (>500 attended)
 - Kidfest, Parksville (>500 attended)
 - Teddy Bear Picnic, Nanoose Bay (>300 attended)
 - Lighthouse Fall Fair, Qualicum Bay (>200 attended)
- Participated in Lot 564 environmental study discussions
- Letter to City of Parksville re: water main flushing affecting the ER watershed

September 2002

- Wrote ERWRP Media advisory. Sent to 11 newspapers; 5 TV; 5 magazine; 4 radio.
- Media briefing invitations and Englishman River Celebration information sent to 14 media outlets (second notice also sent)
- Catered media briefing and wine & cheese event (>75 attended)
- Education and Awareness: Radio interview (CHCI)
 - Created "Salmon Circle of Life" display for ER Celebration
 - Englishman River Celebration, Englishman River estuary (>200 attended)
 - MVIHES provided:
 - * Interactive watershed model
 - * Interactive groundwater model
 - * Fish dissection
 - * Salmon Wheel of Fortune
 - * Free salmon BBQ
 - * Interactive Salmon Circle of Life bracelets
 - * ERWRP information Displays
 - * Interpretive walks on the estuary (fisheries biologist and botanist)
 - Wrote Press release for the great Canadian Shoreline Clean-up on the Englishman River
 - Radio interview (CHLY) re the Recovery Plan
 - Great Canadian Shoreline Clean-up at Top Bridge on the Englishman River
 - ERWRP information display and interactive displays at Rivers Day, Little Qualicum River (>100 attended)

October 2002

- Created an **ERWRP Terms of Reference** document regarding the purpose and activities of the Roundtable and the Steering Committee, and including a **Project Approval Process** (Appendix 6)
- Established a list of candidates for the ERWRP Steering Committee and the Technical Committee
- **The Englishman Patient** written produced and distributed (4 page ERWRP newsletter)
- Represented Recovery Plan at an RDN meeting re: protection of wetlands, ER watershed
- Attended Weyerhaeuser ER watershed assessment study results meeting
- Organized guest speakers for next Roundtable meeting:
 - Texada Land Corporation – Block 564
 - PQ Wildlife Management Area
 - Diver Lake Business Stewardship Project
 - Information on Regional District sponsored Aquifer Study

9 PSEFS Final Report – ERWRP Information & Coordination May 2002 to April 2003

November 2002

- Organized agenda and facilitated ERWRP Roundtable meeting (26 attended)
- Organized and facilitated ERWRP Steering Committee meeting (9 attended)
- Summarized **Project Priorities for 2003 - SUMMARY OF RECOMMENDATIONS FROM THE ENGLISHMAN WATERSHED REPORTS** (Appendix 7)
- Press notice re: trail work being done on banks of ER
- Education and Awareness:
 - Display at FOC Open House at Big Qualicum River Hatchery (>1,000 attended)
 - Organized landowner contact and participation posters for Riparian Planting on Englishman River estuary
 - ERWRP presentation to Parksville Streamkeepers Society AGM

December 2002

- Created ERWRP **Project Application Forms (\$5000 & under ERWRP RT Endorsement Form** (Appendix 8) and **Over \$5000 ERWRP RT Endorsement Form** (Appendix 9)
- Created DRAFT ERWRP **Call for Proposals 2003** document (Appendix 10)
- Attended meeting with Block 564 development proponents
- Gathered watershed information (GPS data on Centre Creek)
- **The Englishman Patient** written, produced and distributed (100 copies)
- Worked on design and format of ERWRP information brochure

January 2003

- Organized and facilitated ERWRP Steering Committee meeting (10 attended)
- Created a DRAFT **Proposal Evaluation Criteria** (Appendix 11)
- Collected Proposals and distributed them to the Technical Review Committee and Steering Committee
- Compiled & Emailed pictures for PSF display at PSF Banquet
- Stewardship project planning (meetings with Marc Gaboury)
- Received and recorded 2003/4 ERWRP proposals
- Organized and set up displays for PSF banquet
- Assisted at PSF banquet
- Attended information meeting re: Block 564 development
- Assembled, submitted ERWRP ad to RDN Recreation Guide

February 2003

- Organized agenda and facilitated ERWRP Roundtable meeting (16 attended)
- Organized and facilitated ERWRP Steering Committee meeting (10 attended)
- Attended Greater Georgia Basin Steelhead Recovery Plan workshop, Nanaimo
- Project development: Automotive Business Stewardship
- Project development: funding proposals for Stewardship & Education projects for 2003
- Education and Awareness:
 - Set up display for Seedy Saturday, QB (>200 attended)
 - Meeting with BCCF re: Steelhead information/ community outreach
 - Gathering Business Stewardship information (maps, business support, advisory committee participants)
 - Re-designed MVIHES website and added an extensive ERWRP section
 - **The Englishman Patient** written, produced and distributed

March 2003

- Interview with CBC re: endangered rivers and the Plan
- Work on **ERWRP Interpretive Sign** (Appendix 12) design with input from Steering Committee members
- Project development: Salish Sea Community Mapping exhibit
- Project development: Streamkeepers Certification Course, Jr Streamkeepers Activity Days (2), Riparian workshop, Hydrology workshop, Business Stewardship project
- Continued development and updating of ERWRP information on website
- Created posters for Brant Festival ERWRP River walk
- Created sandwich board signs for Brant Festival walk
- Prepared ERWRP display for RDN Top Bridge Trail fundraiser (>80 attended)

April 2003

- Organized ERWRP display for Brant Festival, QB (three day display- > 1000 attended)
- ERWRP Display at Earth Day in QB (> 80 attended)
- Represented ERWRP at a PQ Wildlife Management Area information session, Parksville
- Represented ERWRP at a South Coast Steelhead Coalition meeting, Nanoose
- **The Englishman Patient** written, produced and distributed (100 copies)
- Article in PQ News re: Snorkel survey
- Completion of Interpretive Watershed Sign design
- Planning for Shoreline & Estuary awareness presentation to be held in May

Note: As per instructions from PSEF, MVIHES sub-contracted the Stewardship & Education project to Trevor Wicks and the Arrowsmith Watershed Stewardship Team.

Total Expenditures: Information/Coordination & Stewardship/Education

	EXPENSES				TOTAL	TOTAL *	
	May-July	Aug-Oct	Nov-Jan	Feb - April	Expenditures	Budget	Variance
Boundary Marking		\$ 3,750.00	\$ 600	\$ 1,578	\$ 5,927.56	\$ 4,350.00	-\$ 1,577.56
Land Owner Contact		\$ 3,006.18	\$ 1,598	\$ 1,751	\$ 6,354.91	\$ 4,600.00	-\$ 1,754.91
Information Sign				\$ 1,274	\$ 1,274.00	\$ 2,500.00	\$ 1,226.00
Bus Tours			\$ 1,760	\$ 44	\$ 1,803.80	\$ 1,760.00	-\$ 43.80
copying		\$ 304.24	\$ 73	\$ 126			
Format/design		\$ 485.00					
Writing/production	\$ 800.00	\$ 880.00	\$ 800	\$ 800			
Distribution		\$ 150.44	\$ 68	124.33			
Newsletter	\$ 800.00	\$ 1,819.68	\$ 941	\$ 1,050	\$ 4,610.52	\$ 7,400.00	\$ 2,789.48
Website	\$ 300.00			\$ 631	\$ 930.59	\$ 1,200.00	\$ 269.41
Video		\$ 100.00	\$ 100	\$ 790	\$ 989.50	\$ 1,075.00	\$ 85.50
rental	\$ 40.45		\$ 187	\$ 361			
planning	\$ 640.00	\$ 160.00	\$ 2,012	\$ 2,676			
Meetings	\$ 680.45	\$ 160.00	\$ 2,198	\$ 3,037	\$ 6,076.01	\$ 3,200.00	-\$ 2,876.01
AWCS				\$ 156			
Public Awareness		\$ 600.00	\$ 580	\$ 200			
Publicity		\$ 1,530.33		\$ 70			
Display Materials		\$ 390.19					
Public Awareness		\$ 2,520.52	\$ 580	\$ 426	\$ 3,526.19	\$ 3,000.00	-\$ 526.19
AWCS				\$ 797			
Coordinator	\$1,200.00	\$ 1,800.00	\$ 1,500	\$ 1,100			
Ass. Coordinator	\$1,200.00	\$ 900.00	\$ 1,100	\$ 680			
Bookkeeper	\$ 400.00	\$ 370.00	\$ 756	\$ 728			
Overhead		\$ 662.48	\$ 350	\$ 907			
Travel	\$ 100.00	\$ 342.80	\$ 275	\$ 123			
Management	\$2,900.00	\$ 4,075.28	\$ 3,981	\$ 4,335	\$15,291.49	\$17,700.00	\$ 2,408.51
	\$4,680.45	\$15,431.66	\$ 11,759	\$ 14,914	\$46,784.57	\$46,785.00	\$ 0.43

* This is the combined budget of \$30,335 from Pacific Salmon Foundation and \$16,450 from the Vancouver Foundation

Arrowsmith Watershed Stewardship Coalition

		Expenses		In-Kind
1. Identification, etc.	Signage designs	370.00		
	Signs, posts and hardware	1382.66		
	Travel	737.41		
	Labour	3145.00		2234.00
	GPS Unit	292.49		
			5927.56	
2. Land owner contact	Land use verification	495.00		
	Brochure design and prod.	787.41		
	Distribution	2623.00		1091.50
	Landowner visits	2449.50		2278.00
			6354.91	
3. Bus tours		1803.80		
			1803.80	
4. Video footage	Location shooting	502.00		
	Rough-cut and editing	487.50		
			989.50	
5. Public awareness		156.12		
			156.12	
6. Coordination		797.11		780.00
			797.11	
		16029.00	16029.00	

LIST OF APPENDICES

- Appendix 1 – ERWRP Logo**
- Appendix 2 – ERWRP Backgrounder**
- Appendix 3 – Summary of Achievements**
- Appendix 4 – Media Briefing/ Wine & Cheese Reception**
- Appendix 5 – Media Invitation**
- Appendix 6 – ERWRP Terms of Reference**
- Appendix 7 – Summary of Project Priorities for 2003**
- Appendix 8 – \$5000 and Under Application Form**
- Appendix 9 – Over \$5000 Application Form**
- Appendix 10 – 2003 Call for Proposals**
- Appendix 11 – Proposal Evaluation Criteria**
- Appendix 12 – Interpretive Sign design**
- Appendix 13 - Newspaper clippings**
- Appendix 14 – ERWRP Newsletter**

Appendix 1

Watershed Recovery Plan



Appendix 2

Englishman River Watershed Recovery Plan

- The Englishman River has been selected as one of the two watersheds in the Province, the first watershed in the Georgia Basin, for recovery by the Pacific Salmon Endowment Fund Society.
- The Englishman River was chosen due to its manageable size, unique mix of salmon species, development concerns, relatively low level of enhancement activity, and the existence of active stewardship groups in the area.
- Salmon recovery will be supported and implemented by the ERWRP through five main program areas:
 - Develop a strategic plan for salmon recovery
 - Coordinate with activities of government and non-government organizations
 - Implement recovery, monitoring and assessment activities
 - Monitor and evaluate program elements
 - Educate and raise public awareness
- The development and implementation of this plan includes a process that involves community groups, stakeholders, fisheries experts and First Nations.
- The use of scientific principles and technical data are keys to the success of recovery plan.
- The Recovery Plan is intended to be a "living" document, which will be modified, as more information is gathered by assessment and monitoring.
- The main goal will be the recovery of Steelhead and Coho stocks to productive capacity.
- The plan will adhere to the principles of the Federal Government draft Wild Salmon Policy ensuring that the diversity of local salmon populations and their habitats are conserved.
- The Plan will focus on the entire Englishman River watershed which includes five main basins; Englishman River, South Englishman River, Center Creek, Morison Creek and Shelly Creek.
- Founder of the Rick Hansen Institute and Man In Motion Foundation, Rick Hansen is the Interim Chair of the Pacific Salmon Endowment Fund Society. Mr. Hansen is a keen outdoorsman and angler.
- The mission of the Pacific Salmon Endowment Fund Society is to:
Conserve and rebuild Pacific salmon populations through strategic and focused efforts where people and resources are mobilized to work together to achieve common goals.
- Thirty million dollars designated by the Federal Government to the Fund for the preservation and restoration of salmon habitat on the West Coast will provide initial money for the Recovery Plan.
- Activities supported by the endowment fund will be based on the recovery plans. Eligible activities include but are not limited to:
 - Protecting and restoring habitat
 - Restoring fish access to critical habitat
 - Improving freshwater and marine survival
 - Providing information for fisheries management
 - Education

For further information please contact:

Faye Smith (250) 752 9297

Carol Cornish (250) 248 8402

Appendix 3

Summary of Accomplishments – Englishman River Watershed Recovery Plan To June 02

ASSESSMENTS

Overview Assessment of Fish and Fish Habitat in the Englishman River Watershed, Lough and Morley, January 2002

- a survey of fish and fish habitat in the anadromous portion of the ERW, October-November 2001
- 74 habitat units described and 36 representative habitat units sampled for fish
- 7 fish species identified (most were juvenile Coho or Steelhead)
- relative abundance of juveniles higher in tributaries
- limiting factors: low summer flow, lack of over-winter habitat, reduced complexity in juvenile rearing habitat (past logging produced downstream bedload movement and channel aggradation)

Recommendations

- priority of restoration: address low summer flow issues, lack of winter refuge habitat for juveniles and lack of complexity in juvenile rearing habitat
- highest priority areas: Centre Creek (R1 – 3), Englishman River (R1 – 6) and South Englishman River (R2 – 4)

Englishman River Channel Condition Assessment, Northwest Hydraulic Consultants, April 2002

- assessed current channel condition of anadromous reaches of Englishman River, South Englishman River, Centre and Morison Creeks.
- identified historic changes and causes
- identified opportunities for habitat rehabilitation
- questioned benefits of supplemental releases from Arrowsmith Reservoir to address critical low summer flows
- most reaches are recovering from past logging
- sediment transport will maintain the existing substrate condition for many years
- main morphologic issues are lack of LWD

Recommendations

- establish stream gauges on Centre Creek and South Englishman and undertake seepage runs along the Englishman River to determine losses of groundwater
- establish clear procedures for the operation of Arrowsmith Reservoir
- examine potential for water storage or diversion on Centre Creek, and secondly, South Englishman River.
- instream and off-channel works identified in Centre Creek, (R5) and Englishman River (R2 and 3)

COMMUNITY ROUNDTABLE

A Community Roundtable consisting of stakeholders and interested parties—government agencies, stewardship groups, forest industry, farmers, landowners and technical advisors—was established in May 2001. The first meetings were held at the Errington Fire Hall. Since June 2002, the meetings have been held at Shelly Hall in Parksville. The roundtable is a forum for discussing the Plan at the community level and is involved with reviewing proposals and making recommendations for funding.

PROJECTS COMPLETED

Salmon Escapement to Englishman River 2001

- includes Mainstem (swimmers), Timberwest side channel (instream wading), South Englishman (swimmer), Morrison Creek (instream wading), Centre Creek (instream wading)
- monitoring program will track salmon populations to measure whether Recovery Plan objectives are being met and to detect stock declines and increases
- escapements of salmon to Englishman River were estimated at 13,500 pink, 10,400 chum, 11 sockeye, 8,000 Coho, 2,900 chinook and Centre Creek 412 Coho
- future surveys should be conducted from the middle of August through to the middle of January (tributaries when appropriate)
- funded by PSEF

Smolt Enumeration and Coded Wire Tagging

- includes Centre Creek, man-made off-channels and Mainstem
- benefit of improved understanding of current stock status
- CWT of Centre Creek Coho smolts allows for monitoring of marine survival
- funded by PSEF, DFO and MWLAP

Juvenile Steelhead Assessment

- includes tributaries and Mainstem
- improves understanding of habitat use and relative abundance of juvenile steelhead
- 5 index habitat sites identified to be monitored annually for density in mid-summer
- allows for better priority setting in recovery plan
- funded by MWLAP

Winter Steelhead Enumeration

- snorkel surveys of Mainstem and Centre Creek to estimate number of steelhead present in watershed
- improves understanding of relative abundance trends
- allows for better priority setting for recovery efforts
- funded by PSEF and MWLAP

PROJECTS UNDERWAY

Information & Coordination

- Mid Vancouver Island Habitat Enhancement Society (MVIHES) will coordinate and disseminate information regarding the Recovery Plan progress as well as investigate opportunities for community involvement
- MVIHES will raise awareness of the Recovery Plan through a newsletter, press notices, public events and public education (in the schools and throughout the community)
- MVIHES will organize and host up to 8 community roundtable meetings per year
- MVIHES will update the Englishman river Watershed Recovery Plan website
- funded by PSEF and Vancouver Foundation

Stewardship & Education

- Arrowsmith Watershed Stewardship Team (AWST) will inform watershed residents of environmental concerns, best land management practices and the progress of Recovery Plan activities
- AWST will provide watershed residents with resources to promote wise water use, assist residents with information to improve land use practices and assist landowners in acquiring grants, covenants or other incentives for watershed protection and improvement
- AWST will produce site-specific brochures to educate landowners on best management practices
- funded by PSEF and Vancouver Foundation

Stream Flow & Water Quality Monitoring

- includes Centre Creek, Morison Creek, South Englishman River and lower Englishman River Mainstem
- BC Conservation Foundation (BCCF) will monitor current water quality and quantity limitations to fish production
- BCCF will develop a Rule Curve for Arrowsmith Dam fisheries flow releases
- BCCF will assess nutrient levels in Englishman River
- BCCF will raise awareness and improve understanding of current habitat impact issues
- funded by PSEF and MWLAP

Appendix 4



MEDIA BRIEFING/WINE & CHEESE RECEPTION

Friday September 13, 2002

6 – 6:45 pm Media Briefing

7 – 9 pm Wine & Cheese Reception

Location: Island Hall Beach Resort, 181 West Island Highway, Parksville, BC

The purpose of the Sept. 13 event is to raise awareness of the PSEF and its important contribution to the recovery of the salmon stocks in the Englishman River watershed. This gathering will raise the profile of the Fund as well as highlight the plight of one of BC's most endangered watersheds.

The Media Briefing will introduce a broad spectrum of local, provincial and national media to the PSEF and the ERWRP. (We need to have some sort of drawing card to entice the more distant reporters.)

Representatives of local, regional, provincial and federal governments, local businesses as well as Recovery Plan participants and the members of the community roundtable will be invited to the Wine & Cheese Reception (which will feature local products).

Representatives from PSF, PSEF, LGL and Vancouver Foundation (?) will make brief presentations about the Recovery Plan. There will be displays pertinent to the Plan in the reception hall.

COMMUNITY CELEBRATION OF ENGLISHMAN RIVER

Saturday September 14, 2002

1 – 4 pm games & activities for kids, free salmon BBQ, displays, tours

Location: on the ER estuary in Parksville

This will provide an opportunity for people in the community to become informed about the Plan and learn more about their river.



ERWRP

PO Box 935
Parksville, BC
V9P 2G9

(250) 752 9297
(250) 248 8402

Appendix 5

Englishman River Watershed Recovery Plan

September 3, 2002

"More than 11,000 species are now considered threatened and more than 800 species have already become extinct due to loss of habitats. Another 5,000 species are potentially threatened unless efforts are taken to reverse their population declines"

United Nations Secretary-General Kofi Annan,
Report to the World Summit on Sustainable Development 2002

The Englishman River Watershed Recovery Plan (ERWRP) Roundtable will be hosting a media briefing followed by a wine and cheese reception to raise awareness of the plight of one of B.C.'s most endangered rivers and the important contribution the Pacific Salmon Endowment Fund Society (PSEFS) and community groups are making to the recovery of the salmon stocks in the Englishman River watershed. The event will feature presentations by representatives of the Pacific Salmon Foundation and the PSEFS as well as displays by various groups working in the watershed.

The event will be held at the:

Island Hall Beach Resort
181 West Island Hwy
Parksville, BC

Media Briefing
Friday, September 13th
6 to 6:45 pm

Wine and Cheese
7 to 9 pm

The Englishman River has been selected as one of the two watersheds in the Province, the first watershed in the Georgia Basin, for recovery by the Pacific Salmon Endowment Fund Society. The recovery plan is a crucial step in the recovery of coho and steelhead stocks on this important salmon-producing stream on the east coast of Vancouver Island. The watershed supports all species of salmon, as well as steelhead and cutthroat trout.

It is hoped that PSEFS led community efforts on the Englishman River will attract the support and commitment required to continue this work and initiate comprehensive recovery programs on other high priority streams in the province. Please join us in celebrating a bright spot in the often bleak picture of our beleaguered wild salmon!

Contact:

Faye Smith
ERWRP
Project Manager
752-9297

Carol Cornish
ERWRP
Project Coordinator
248-8402

Wild salmon, our children's legacy

Appendix 6

ERWRP TERMS of REFERENCE

ROUND TABLE (RT):

i. Membership – Representatives (to be chosen by the body concerned) from:

- a) First Nations.
- b) Stewardship Groups.
- c) Community NGO/Stakeholders (e.g. businesses/organizations, farming, fishing, forestry, & tourism, residents' associations, etc.).
- d) Local Governments and Provincial & Federal Agencies.

ii. Purpose – To promote, develop, and implement long-term community stewardship and conservation of the Englishman River Watershed's natural resources, especially its salmonid resources by:

- a) Continued development and implementation of the Englishman River Watershed Recovery Plan and the individual projects required to achieve it.
- b) Continued development and implementation of community-based and -driven ERWRP stewardship and conservation goals and priorities.
- c) Encouraging the community to take ownership of the Plan, and promoting broad community understanding of, and support for, the goals and priorities developed.
- d) Promoting co-operation and understanding between stakeholders.
- e) Continued development of local and outside funding support for the Plan.

iii. Activities – the Round Table's activities will include:

- a) Establishing annual stewardship and conservation priorities and objectives.
- b) Issuing semi-annual Calls for Proposals in line with these priorities and objectives.
- c) Reviewing and endorsing projects.
- d) Reviewing and approving project reports.
- e) Electing a Steering Committee and a local Technical Review Committee.
- f) Ensuring the development and implementation of an effective public awareness, education, and communications strategy.
- g) Acting as the Pacific Salmon Endowment Fund's (PSEF) Public Advisory Body for ERWRP.

STEERING COMMITTEE/LOCAL TECHNICAL REVIEW COMMITTEE (S/TRC):

i. Membership – representatives will be sought from each sector (i.e. First Nations, stewardship groups, local governments, federal and provincial agencies, local business stakeholders –farmers/forestry/fishing/tourism, etc.), while attempting to keep the committee to a manageable size of 7-9 by doubling up representation where possible. Members will be asked to try to ensure continuity of attendance. To this end, sectors should elect alternates.

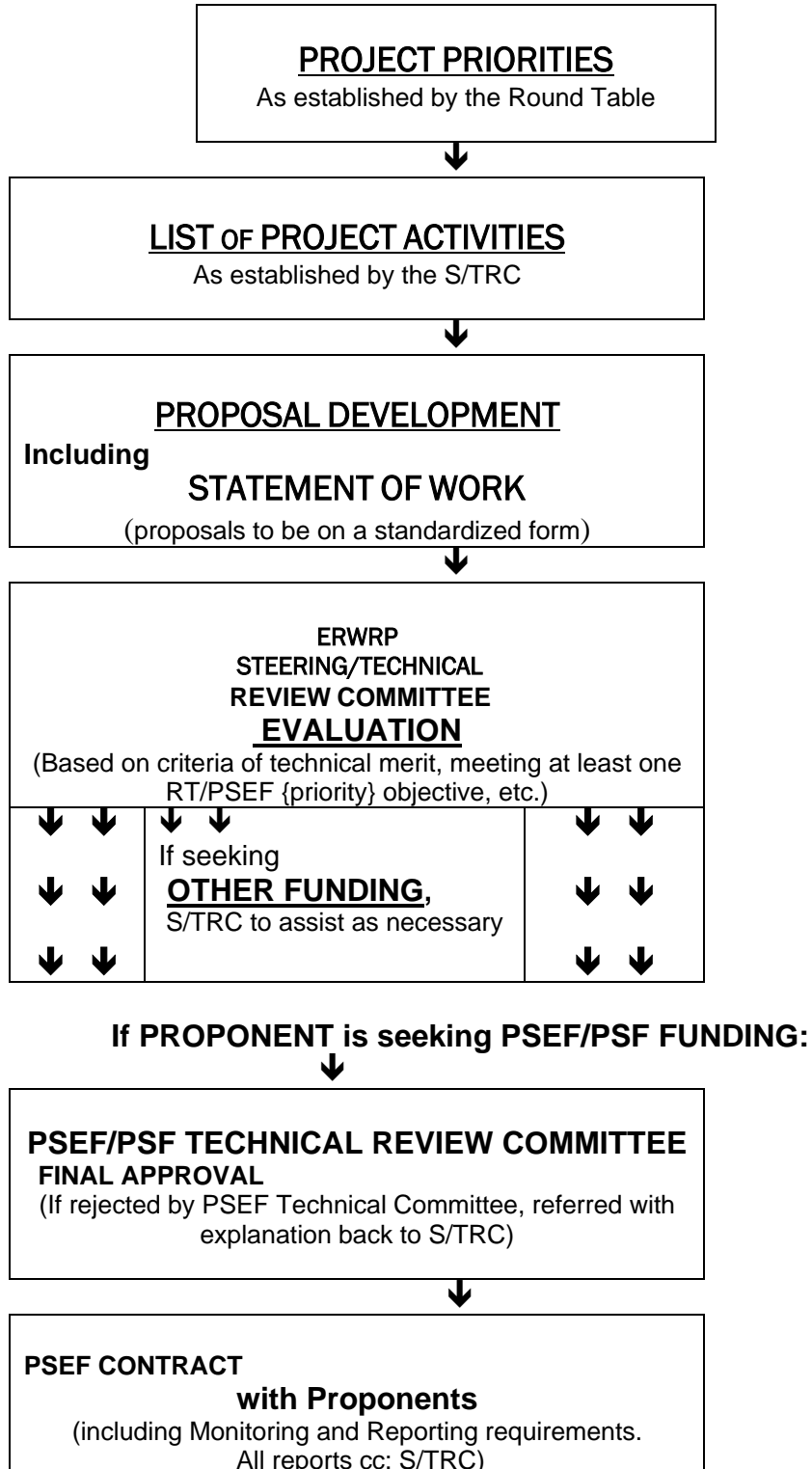
ii. Purpose – to implement decisions and streamline the work of the Round Table (RT).

iii. Activities - the S/TRC will assist the RT's work by:

- a) Ensuring all RT members are able to have full and informed input.
- b) Ensuring that the RT's meetings are effective and informative.
- c) Preparing recommendations to assist the RT on all relevant ERWRP topics (e.g. Plan development, goals, project priorities, funding allocation, etc.).
- d) Establishing and reviewing, as necessary, proposal evaluation criteria.
- e) Evaluating the technical merit of project proposals (N.B. the S/TRC may strike a sub-committee to carry out this task if not all members wish to participate) and recommending, rejecting, or referring proposals for redrafting.
- f) Establishing and ensuring adequate resources to support the work of the Steering Committee.

ERWRP Project Approval Process

The Steering Committee/local Technical Review Committee (S/TRC) will evaluate and approve/reject/refer all proposals seeking ERWRP approval for technical merit and consistency with the overall Recovery Plan's goals. When a proposal is seeking PSEF funding, the S/TRC will attempt to ensure the proposal, or that part of it to be funded by the PSEF, meets the PSEF/ERWRP criteria, including that of community support. The approval process should operate broadly as follows:



Appendix 7

SUMMARY OF RECOMMENDATIONS FROM THE ENGLISHMAN WATERSHED REPORTS

These recommendations are derived from the following 3 reports submitted to the PSEF Englishman River Watershed Recovery Plan.

- 1) Englishman River Watershed Recovery Plan (LGL LTD; Sept 2001)
- 2) Englishman R. Channel Condition Assessment (northwest Hydraulic Consultants; April 2002)
- 3) Overview Assessment of Fish and Fish Habitat in the Englishman R. Watershed (Lough and Morley, January, 2002)

Overall Purpose of the Recovery Plan

- Recovery plan must focus on what is good for the fish
- Primary purpose of the recovery plan is to identify and set priorities for activities required to achieve the recovery goals for the watershed and its fish stocks

1) Stewardship and Coordination

- Implementation of a public education program to promote the wise use of water and improved land practises. This should include a component to assist landowners to acquire grants, covenants and other incentives to protect riparian areas and improve water use practises.

2) Monitoring, Planning and Assessment

a) Monitoring

i) Stock Recovery Monitoring

- Between 40,000 to 60,000 coho smolts be established as the recovery target range and adult spawner abundances of between 2,000 and 3,000.
- Between 6,000 and 8,000 steelhead smolts be established as the target recovery range and adult spawner abundances of between 400 and 500.
- Between 20,000 and 30,000 chum adults should be established as the target abundance for recovery.
- Between 3,000 and 5,000 pink adults should be established as the target abundance for recovery.
- Chinook ?? – no estimates given

ii) Physical Works / Activity Effectiveness

- Routine monitoring of works to determine if they are functioning as intended; to determine if remedial work is needed and to identify specific areas which may warrant more detailed monitoring
- .Intensive monitoring to determine the inter-relationships of specific recovery activities

iii) Evaluation of Watershed Recovery

- Evaluated in terms of attaining coho and steelhead population targets and rehabilitating watershed processes.

b) Planning

- The development of an estuary management plan with clear direction regarding development and rehabilitation. The plan should include:
 - Protection of critical salmon habitats
 - Reductions in pollution discharges to the estuary
 - Maintenance of sloughs and small channels
 - Controls on further development and alienation of more habitat
 - Establish habitat management plans, best practises for protection and stewardship programs
- c) Assessment
- Conduct a feasibility study on the establishment of a large adult fence on the lower Englishman River

i) Juvenile Coho

- Smolt assessment should be continued and expanded to include a smolt fence on Morison Cr and Centre Cr. and recapturing smolts downstream in 2 rotary screw traps
- Obtain a reliable mark-recapture estimate of total coho smolt production
- Coded wire tag 20,000 coho smolts
- Collect biological data for coho including size and age

ii) Juvenile Steelhead

- Smolt enumeration program for coho should be expanded for steelhead smolts
- Obtain a reliable mark-recapture estimate of total steelhead smolt production
- Collect biological data for steelhead including size and age

iii) Adult Coho

- Adult assessment should be continued with swims, AUC estimates and ultimately an adult fence or resistivity counter in the lower river
- Annual estimates of coho stream life be obtained using tagging and resighting methods
- Annual estimates of observer efficiency should be made
- Adult fences on Centre Cr. and Morison Cr. be operated
- If feasible, a large counting fence be established on the lower Englishman R.

iv) Adult Steelhead

- Swims should be expanded to entire anadromous sections
- If feasible, a large counting fence be established on the lower Englishman R.

v) Habitat Assessment

- Riparian assessment needed
- Water quality and quantity monitoring should be continued. Stream gauges should be installed on Centre Cr. and the South Englishman R. Daily records of flow should be collected.
- Seepage runs along the Englishman R. should be established to identify sites where surface water percolates into the bed and determine the volumes that are lost.
- Sediment source survey

3) Habitat Restoration

The recommended priority of restoration activities (recommended by both NHC and Lough and Morley) are:

- a) Address low summer flow issues
- b) Address winter rearing / refuge issues
- c) Address issues associated with lack of complexity in juvenile rearing habitat

Treatment areas were prioritized according to their production potential, where addressing habitat shortcomings would affect the greatest amount of habitat and potentially produce the largest increase in smolt production. These are as follows:

- a) Centre Cr. (Reaches C1 to C3)
- b) Englishman River (Reaches E1 to E6)
- c) South Englishman River (Reaches SE2 to SE4)

Summer Low Flows

- Develop a clear process for optimal water releases from the Arrowsmith Dam and participate on the committee that allocates water from the reservoir.
- Investigate the potential for water storage on Centre Cr. and the S. Englishman R.

Winter Rearing

- Establish off-channel rearing sites on the Englishman R. at Km 10.3 and km 12.5 and km 4.6 (in TW Block 602 downstream of the hatchery) (NHC and L&M)
- Establish off channel rearing sites along Centre Cr. (NHC)

Lack of Complexity

- Install LWD or other structures in Centre Cr. in Reach C1
- Install LWD or other structures in Reach E5, the off-channel in TimberWest's Block 602 and in flood channels behind some of the elevated gravel bars in Reach's E2 and E3.
- Install LWD or other structures in Reaches SE 2 to SE 4.



Appendix 8
ENGLISHMAN RIVER WATERSHED RECOVERY PLAN (ERWRP)
COMMUNITY ROUNDTABLE
APPLICATION for PROJECT ENDORSEMENT
(\$5,000 & UNDER)

Instructions

- Please submit your application by _____.
- At least **1** of your project's targets/objectives must be on the ERWRP List of Priorities for the coming year.
- This Application Form is **only** for proposals requesting **\$5,000** or less. Proposals over \$5,000 must use the "Over \$5,000" form

A. Proponent Name _____

B. Proponent Address _____

(Phone/Fax)

(Email)

A. Project Name _____

B. Project Location _____

(ERWRP Area, e.g. Name of Nearest Creek & Name of Neighbourhood)

C. Amount Requested: **\$**

D. Project Timeframe:

(Start Date)

End Date)

E. Project Description:)

1. What are your project's goal(s)?

2. What activities will your project involve?

3. Who will be involved and how will they be contributing (i.e. by donating funds, materials, labour)? Will any of those involved be paid? If yes, how much and for what activities?

4. Does your project require any government agency/private landowner permits or approvals? If yes, list the permits/approvals necessary and whether or not you have obtained them.

5. How will you measure your project's success? (Give concrete examples.)

F. Budget - List your project's anticipated income and expenditures using the following format:

Income: PSEF	\$
Other Cash Sources	\$
In-Kind	\$
Total Cash plus In-Kind (<i>must</i> equal 50% of Project Total)	\$
TOTAL PROJECT INCOME	\$
Expenses: Labour	\$
Equipment/Machinery Rental	\$
Materials/Supplies	\$
Overhead	\$
TOTAL PROJECT EXPENSES	\$



Appendix 9
ENGLISHMAN RIVER WATERSHED RECOVERY PLAN (ERWRP)
COMMUNITY ROUNDTABLE
APPLICATION for PROJECT ENDORSEMENT
(OVER \$5,000)

Instructions

- Please submit your application by _____.
- At least **1** of your project's targets/objectives must be on the ERWRP List of Priorities for the coming year.
- This form is for proposals requesting **more than \$5,000**. If are requesting \$5,000 or less, please use the \$5,000 and under form
- Attach **no more than 2** additional pages with comments or other information (do **not** include/attach Letters of Support) if you feel space is too limited here.

PART I - IDENTIFICATION

A. Proponent Name _____

B. Proponent Address _____

(Phone/Fax) _____
(Email) _____

PART II - PROJECT OVERVIEW

A. Project Name _____

B. Project Location _____
(ERWRP Area, e.g. Creek Name & Reach #/Description;
Community/Neighbourhood Name – Attach Map of Area If Possible)

C.1 Project Cost

(List Expected Funding Sources)

Total Cost	\$
1. ERWRP/PSEF	\$
2.	\$
3.	\$
Volunteer/In kind	\$

C.2 Funding in Place

(List Funding Already in Place)

Total \$ in Place	\$
1.	\$
2.	\$

D. Project Timeframe _____

(Start Date _____ End Date)

E. Project Type (Check all that apply)

Stock Assessment/Inventory/Enhancement _____
Habitat Restoration _____
Education & Public Awareness _____
Stewardship/Community Planning _____

F. Project Partnerships

List your project's active partners, i.e. agencies/organisations providing planning/supervisory/etc. support.

Agency/Organisation & Contact Name

Phone/Fax # and E-mail

PART III - PROJECT DESCRIPTION

A. Project Rationale and Objectives: (*Briefly*) Describe your project's rationale/problem being addressed and how your project will help the Recovery Plan meet its current Priorities.

B. Project Design and/or Assessment Standards: Describe your project's design/assessment standards and list the relevant certification or other qualification of experts or specialists involved in it.

C. Project Work plan and Timetable: Describe your project's proposed activities and timetable, e.g. stock/species to be addressed and why, instream work to be completed, information to be gathered, mapping/inventory to be completed, details of habitat restoration/reclamation, community/stakeholder sector to be contacted/involved, etc.

D. Deliverables: Describe your project's anticipated deliverables, i.e. its concrete measures/indicators of success.

E. Monitoring and Maintenance: List any project deliverables which will require long-term monitoring/maintenance and describe your plan (if any) for carrying out this monitoring/maintenance.

F. Project Approvals: List the required agency/landowner permits/approvals required by your project and their current status (e.g. not yet applied for/pending/approved).

G. Letters of Support: List (but **do** not attach) any agency/community/etc. letters of support for your project.

H. Community Involvement: Describe how and to what extent the community will be involved in your project and how it will assist ERWRP's community awareness/education/involvement goals.

I. Administration: How will you ensure your project is completed on time? On budget?

PART IV – PROJECT BUDGET

Please provide a breakdown of your project's costs using the format below. Agency or other (non-ERWRP/PSEF) funding should be placed in the In-Kind/Cash column.

Labour – Wages and Salaries Position	# of Crew	# of Days (include Stats)	Hrs. per Day	Rate per Hr.	Total	In-Kind/ Cash	ERWRP/ PSEF Request
				\$	\$	\$	\$
				\$	\$	\$	\$
				\$	\$	\$	\$
				\$	\$	\$	\$
				\$	\$	\$	\$
Sub-total					\$	\$	\$

Labour – Employer Costs (% of Wages subtotal)

(CPP, EI, WCB, Vacation Pay) Rate	%		Sub-total	\$	\$	\$
-----------------------------------	---	--	-----------	----	----	----

Subcontractors and Consultants

Position	# of Crew	# of Days	Hrs. per Day	Rate per Hr.	Total	In-Kind/ Cash	ERWRP/ PSEF Request
				\$	\$	\$	\$
				\$	\$	\$	\$
				\$	\$	\$	\$
Sub-total					\$	\$	\$

Volunteer Labour - # of Crew # of Days Hrs. per Day Rate per Hr. Total In-Kind Total

Skilled				\$25	\$	\$	
Unskilled				\$15	\$	\$	
WCB (if applicable)					\$	\$	
Sub-total					\$	\$	
Total Labour Costs					\$	\$	\$

Site/Equipment Costs

Description	Total	In-Kind/ Cash	ERWRP/ PSEF Request
Travel	\$	\$	\$
Small Tools & Equipment	\$	\$	\$
Site Supplies & Materials	\$	\$	\$
Equipment Rental	\$	\$	\$
Work & Safety Equipment	\$	\$	\$
Safety Training/Supplies	\$	\$	\$
Permits	\$	\$	\$
Capital Costs	\$	\$	\$
Other	\$	\$	\$
Total Site/Equipment Costs	\$	\$	\$

Overhead

Description	Total	In-Kind/ Cash	ERWRP/ PSEF Request
Office Rent & Utilities	\$	\$	\$
Insurance	\$	\$	\$
Office Supplies	\$	\$	\$
Telephone	\$	\$	\$
Photocopying & Printing	\$	\$	\$
Other	\$	\$	\$
	\$	\$	\$
	\$	\$	\$
Total Overhead Costs	\$	\$	\$

Budget Summary (In-Kind/Cash + ERWRP/PSEF)

Labour	\$		
Site/Equipment	\$		
Overhead	\$		
Total	\$		\$

Appendix 10
Englishman River Watershed Recovery Plan - 2003
CALL for PROPOSALS

1. Foreword

1.i. The ERWRP Community Round Table (RT) is issuing a Call for Proposals for projects to assist the Englishman River Watershed Recovery Plan (ERWRP) achieve its objectives for 2003. The **Deadline** for receipt of proposals to this Call is **4.00 p.m., January 17, 2003**. Proposals received after this deadline will not be considered before the next ERWRP Call for Proposals.

1.ii. The main focus of this Call is on Recovery Plan priorities as identified by the reports listed in **2.ii.** below, but not as yet addressed by ERWRP. These priorities are described in *Appendix 1: ERWRP 2003 – Call Priorities*.

1.iii. The ERWRP Community Round Table is the Pacific Salmon Endowment Fund's (PSEF) Englishman River Watershed Recovery Plan Public Advisory Body and proposals seeking PSEF funding must first be vetted and endorsed by the RT. The Mid-Vancouver Island Habitat Enhancement Society (MVIHES) acts as the RT's Facilitator and any queries concerning this Call should be addressed to the MVIHES at mcwar@shaw.ca.

2. Eligibility Requirements (PSEF Funding)

2.i. To be eligible both for the Round Table's endorsement and for funding from the PSEF, projects must be within the boundaries of the Englishman River Watershed, address PSEF concerns about Englishman River coho and/or steelhead stocks, and undertake activities in one of the following categories:

1. Community Stewardship & Information
2. Assessment & Monitoring
3. Habitat Restoration.

2.ii. Proponents seeking PSEF funding must also address at least one of the ERWRP Priorities contained in this Call's Appendices. Further information and background on these priorities may be obtained from the following reports (available for downloading from either <http://www.psf.ca/04programs/04englishman.html> or <http://mvihes.bc.ca>):

Englishman River Watershed Recovery Plan, Robert Bocking and Marc Gaboury,
LGL Ltd., Sidney, B.C., September 2001;

Englishman River Channel Condition Assessment: Final Report, Ken Rood,
Northwest Hydraulic Consultants, North Vancouver, B.C., October 2001;

Overview Assessment of Fish and Fish Habitat in the Englishman River Watershed, M. J. Lough
and C. F. Morley, Pacific Salmon Endowment Fund, Vancouver, B.C., January 2002.

Proponents may also find Weyerhaeuser's *Englishman River Watershed Assessment* of interest. This report is available for viewing only at Weyerhaeuser's Front Street office in Nanaimo (contact: Shelly Higman, (250) 755-3421).

3. Eligibility Requirements (Other Funding - i.e. Non-PSEF)

3.i. As part of its mandate as a Community Round Table, the RT will attempt to assist projects which are not eligible for PSEF funding but which nonetheless will benefit the Englishman River Watershed and its recovery. The Round Table is therefore prepared to evaluate and endorse such projects and to provide Letters of Support and other (limited) forms of practical assistance for such proposals.

3.ii. In addition to the eligibility requirements summarised in **2.** above and in this Call's Appendices, proposals will be eligible for the Round Table's endorsement, *but not for PSEF funding*, if they:

1. address concerns about Englishman River chinook, chum, pink salmon, and cutthroat trout stocks;
2. undertake enhancement activities.

However, proponents should remember that such proposals must seek their funding from sources other than the PSEF. Proponents should also understand that the Round Table's endorsement of their proposal may not carry the same weight with other funding sources as it does with the PSEF.

Proponents who are not seeking PSEF funding are therefore advised to contact the Mid-Vancouver Island Habitat Enhancement Society (MVIHES), the RT's Facilitator, before responding to this Call.

4. Format

4.i. Proposals must be submitted on the application form required by the Round Table. Forms may be downloaded from the MVIHES's website (<http://mvihes.bc.ca>), or obtained by e-mailing mcwar@shaw.ca, by phoning M. C. Warrior at (250) 722-2970, or by regular mail from: **MVIHES, c/o F. Smith
221 Elizabeth Avenue, Qualicum Beach, B.C. V9K 1G8.**

4.ii. Proponents should note that there are **two different** Application Forms, one for proposals requesting **more than \$5,000** in PSEF funding and another, simplified form for proposals requesting **\$5,000 or less** from the PSEF.

4.iii. Proponents are advised that all proposals must be submitted both electronically and in ten (10) hard (i.e. printed) copies.

- Electronic submissions should be sent by e-mail to mcwar@shaw.ca.
- The 10 hard copies should be mailed to the MVIHES, c/o F. Smith, at the above address, or on January 17 *only*, the deadline date, delivered by hand to the above address.

Proponents who have difficulty meeting these submission requirements should contact M. C. Warrior for assistance.

5. Local Preference & Proponent Competency Requirements

All other considerations being equal, preference will be given to proponents or proponent organisations resident or based in the Regional District of Nanaimo or in the regional districts immediately adjacent to the RDN. In addition, proponents are expected to be familiar both with the Englishman River Watershed and the Englishman River Watershed Recovery Plan and may be required to provide evidence of such familiarity.

6. PSEF Funding Evaluation Process

All proposals will be screened to ensure they comply with the RT's eligibility requirements. After screening, proposals will be forwarded to the RT's Technical Committee (whose members consist of local provincial and federal "stakeholder" agency staff and independent fisheries biologists) for evaluation of their technical merit. If endorsed by the Technical Committee, they will then be reviewed by the RT's Steering Committee. If endorsed by the Steering Committee, they will be forwarded electronically to the RT's membership and, if no objections are raised, forwarded to the PSEF for final review.

Appendix 11

Proposal Evaluation Criteria

1. Proposal must meet PSEFS criteria as presented in the Plan regarding Stewardship, Monitoring, and Restoration (Focus on what is best for fish). Yes / No
2. Does the proposal address the priorities listed in Appendix 1 and/or 2 of the Call for Proposals? Yes / No
3. Is the proposal cost effective? /5
4. Is the proposal technically feasible? /5
5. Priority may be given to ongoing projects where success of previous work has been demonstrated. /5
6. Priority will be given to projects with in-kind support. /5
7. Extra consideration will be given to projects that demonstrate local stewardship involvement and local hiring practises. /5
8. Proposals must demonstrate an understanding of ecological processes within the watershed. /5
9. Proposals must demonstrate an understanding of all agency and landowner requirements. /5

Appendix 12
Interpretive Sign design

attached

Appendix 13

Newspaper Clippings

attached

Appendix 14

ERWRP Newsletter

attached